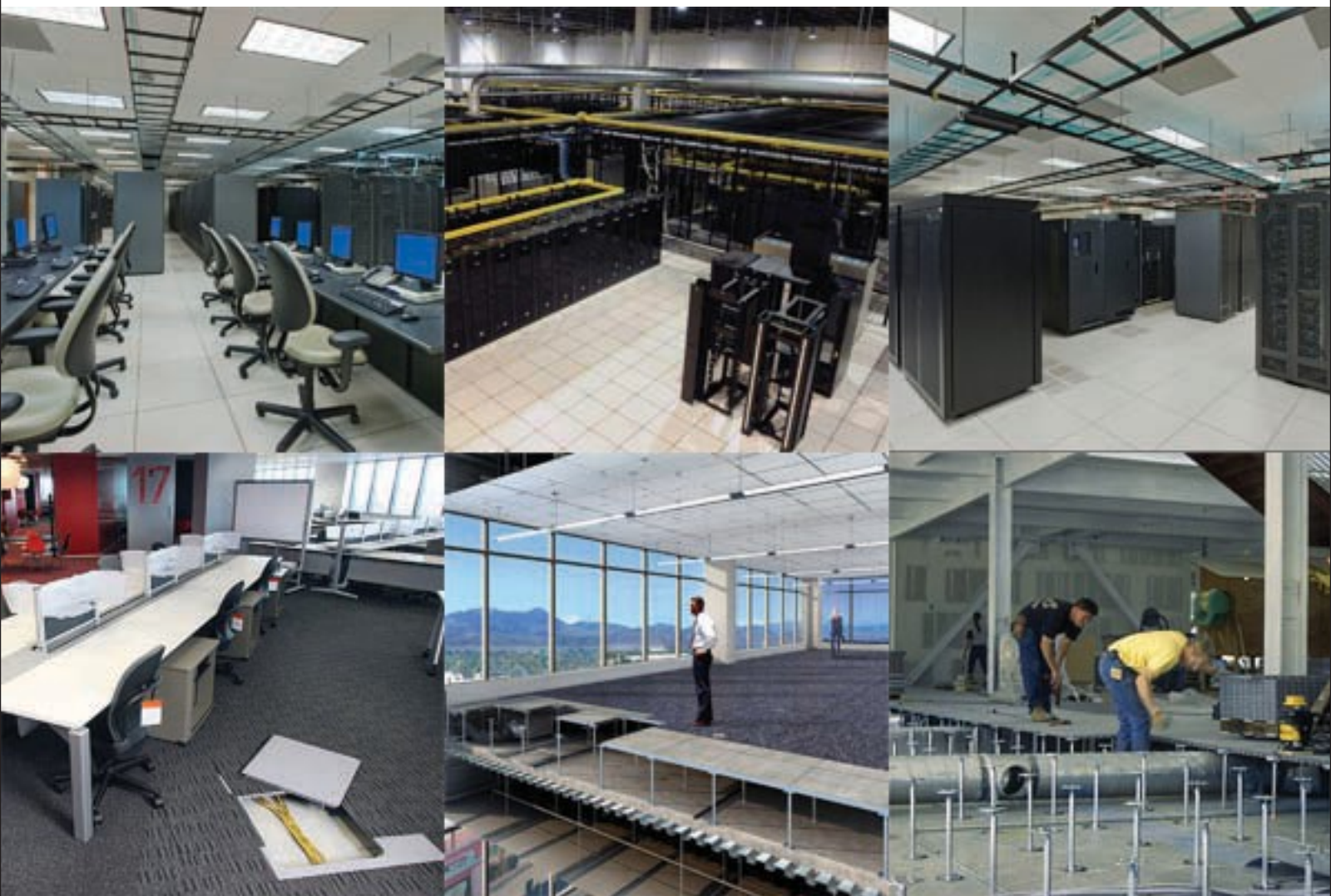




INTEGRADORES Y CONSULTORES EN TECNOLOGÍA



SteelCrete Access Floor

Product Guide



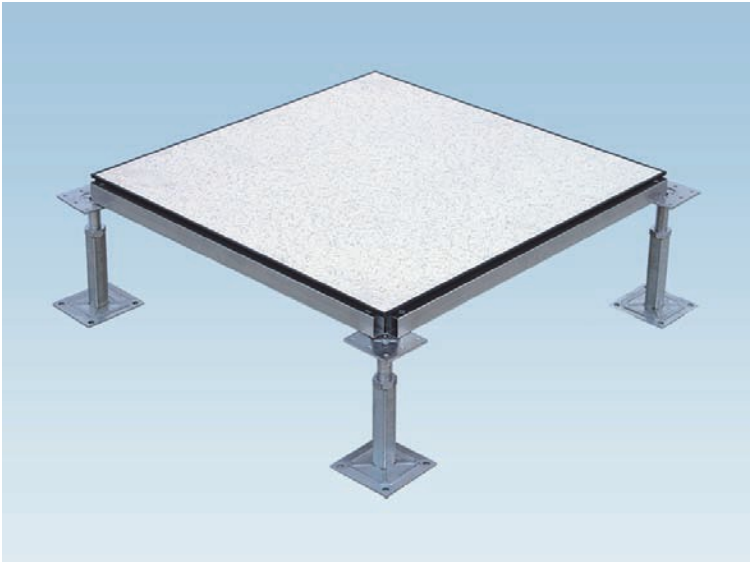
Data Center



With none-combustible concrete-and-steel composite structure, SteelCrete Access Floor is the strongest, most durable access floor system in the world.

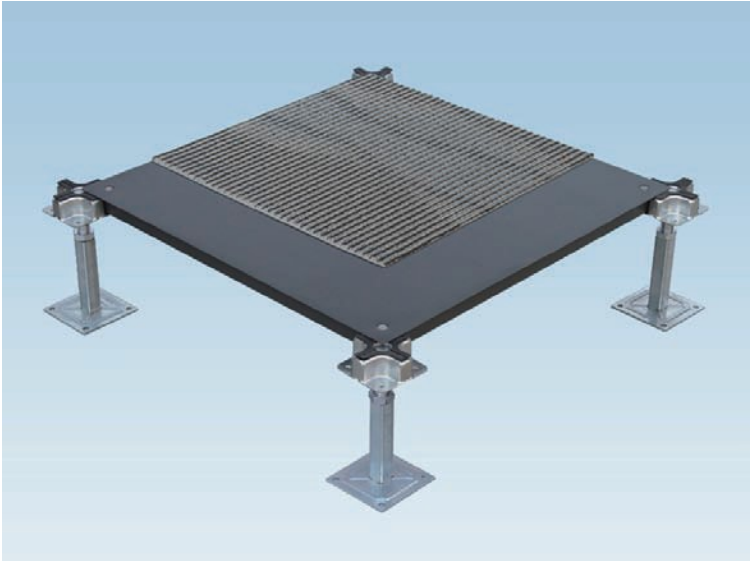
“You leave yourself an enormous margin of safety. You build a bridge that 30,000-pound trucks can go across and then you drive 10,000-pound trucks across it. That is the way I like to go across bridges.” -- Warren E. Buffett, Chairman of Berkshire Hathaway.

SteelCrete Access Floor



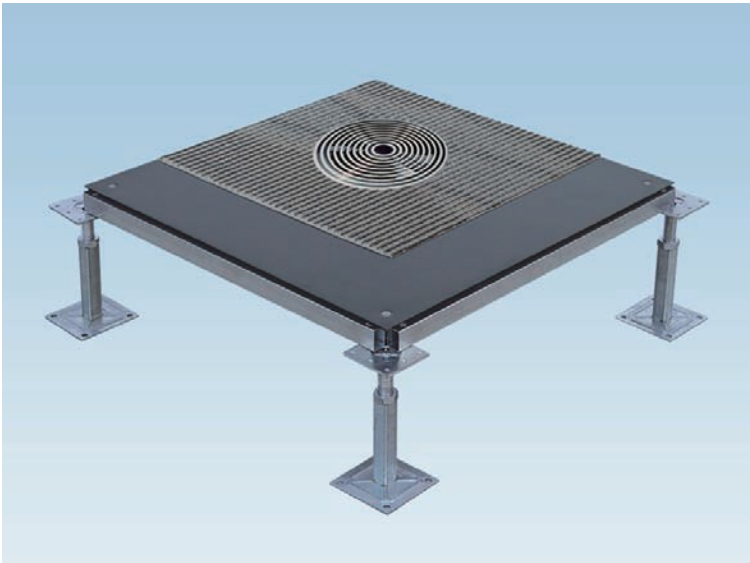
SteelCrete Bolted Stringer System for Data Center Applications

- HPL/Vinyl Finished SteelCrete Panel + Perforated Panel + Bolted Stringer System
- Designed for Data Center applications.



SteelCrete Corner Lock System for General Office Applications

- Bare Finished SteelCrete Panel + Corner Lock System
- Designed for General Office applications.



SteelCrete Bolted Stringer System for UFAD Applications

- Bare Finished SteelCrete Panel + Bolted Stringer System
- Designed for Underfloor Air Distribution applications.

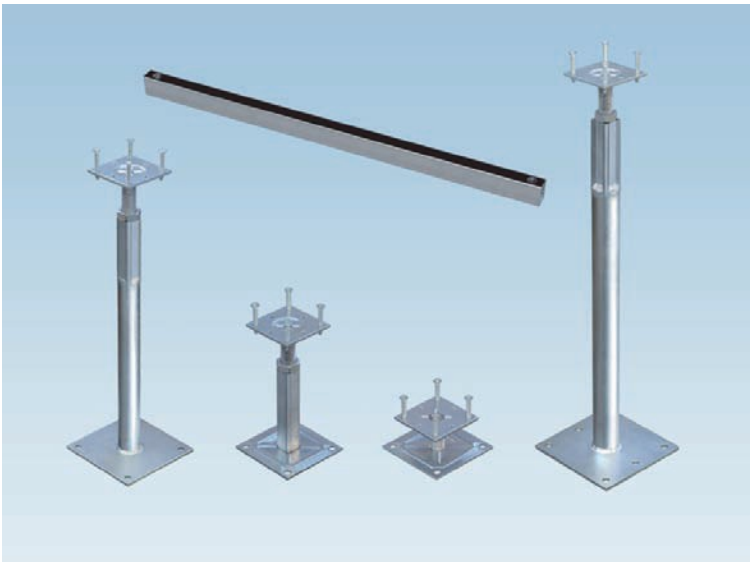
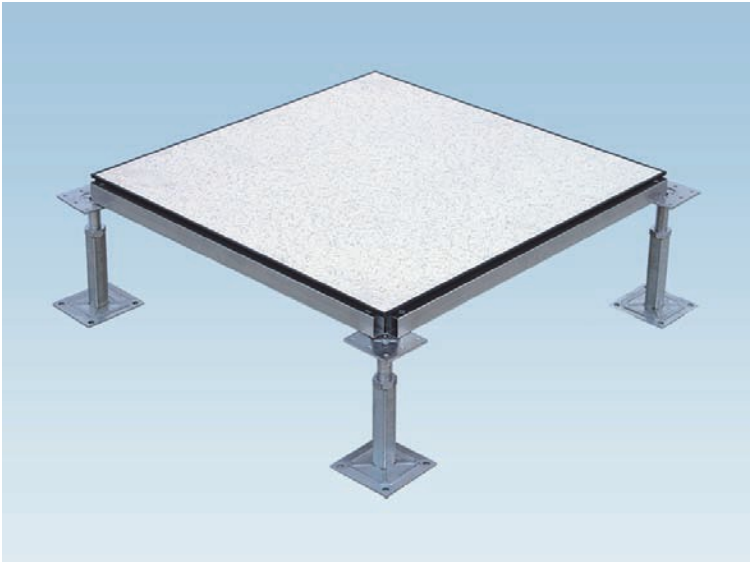
SteelCrete Access Floor for Data Center



- Access floor panels with factory-bonded HPL finishes have become the standard in Data Center because of its ease of maintenance and its unique ability to dissipate static electricity.
- For strictly static sensitive applications, access floor panels with factory-bonded Vinyl finishes are better choices.

HPL/Vinyl Finished SteelCrete Access Floor Performance Chart

General Information				Static Loads			Rolling Loads		Impact Loads
SteelCrete Panel	Top/Bottom Steel	Understructure	System Weight	Concentrated Loads	Ultimate Loads	Uniform Loads	10 Passes	10,000 Passes	
FS800H	0.8/0.7mm	Bolted Stringer	10lbs/ft² 48kg/m²	800lbs 363kg	2400lbs 1089kg	300lbs/ft² 14.35kPa	600lbs 272kg	500lbs 226kg	150lbs 68kg
FS1000H	0.8/0.9mm	Bolted Stringer	10.6lbs/ft² 51kg/m²	1000lbs 454kg	3000lbs 1363kg	350lbs/ft² 16.75kPa	800lbs 363kg	600lbs 272kg	150lbs 68kg
FS1250H	1.0/1.0mm	Bolted Stringer	11.2lbs/ft² 54kg/m²	1250lbs 567kg	3750lbs 1701kg	400lbs/ft² 19.1kPa	1000lbs 454kg	800lbs 363kg	150lbs 68kg



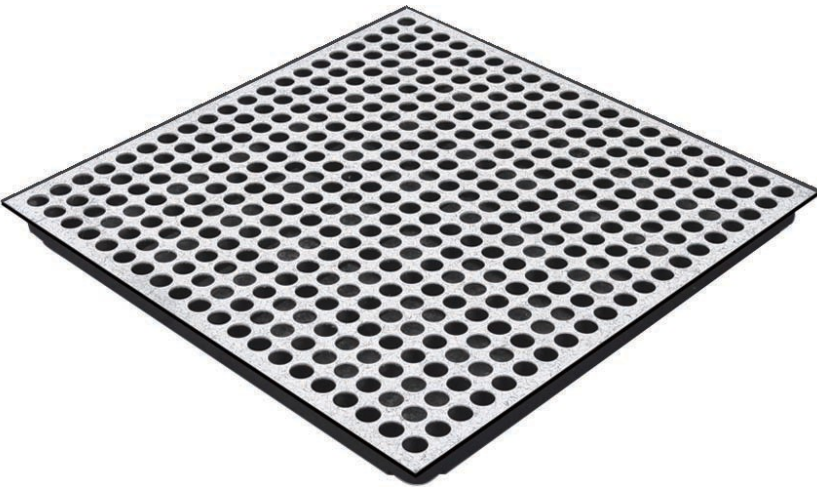
HPL/Vinyl Finished SteelCrete Panel + Perforated Panel + Bolted Stringer System

- Dimension: 600mm x 600mm.
- SteelCrete panel grades: SC800, SC1000, SC1250.
- Wide range of HPL/Vinyl finishes.

Bolted Stringer System

- Finished floor heights: 150mm ~ 1200mm.
- PVC taped rectangular stringer provides excellent loading and air-tightness performance.
- SteelCrete Access Floor is Zinc Whisker Free.

SteelCrete Access Floor for Data Center

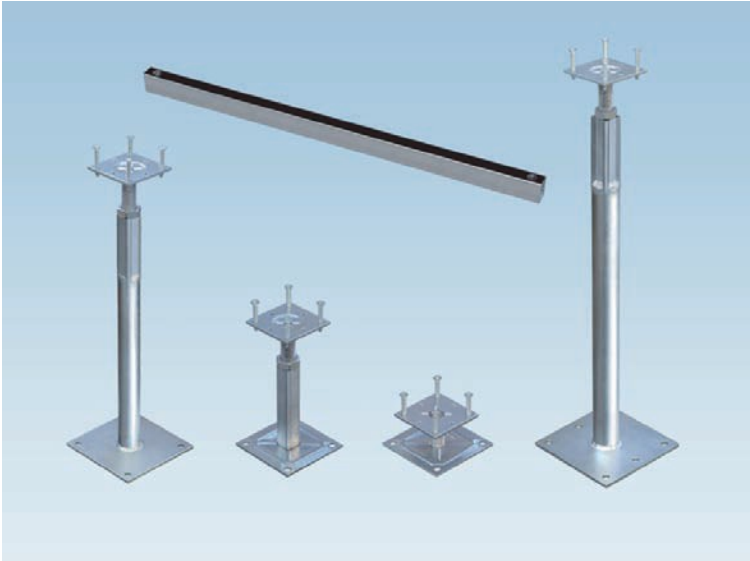
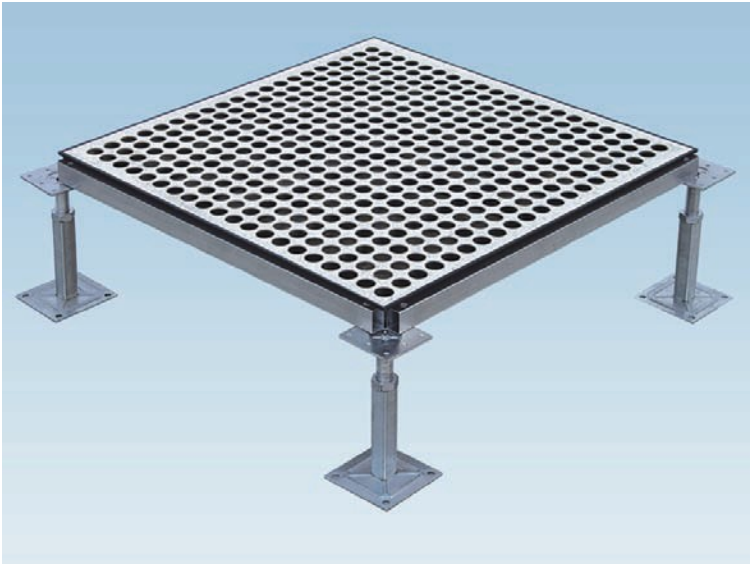


Perforated Panel For SteelCrete Access Floor

- Perforated panel is specially constructed to allow for air flow distribution from under the raised access floor. In today's data center design, 45% airflow rate of perforated panel is the minimum requirement.

SteelCrete Perforated Panel Performance Chart

General Information				Static Loads			Rolling Loads		Impact Loads
Perforated Panel	Top Steel	Understructure	System Weight	Concentrated Loads	Ultimate Loads	Uniform Loads	10 Passes	10,000 Passes	
PERF1000	1.5mm	Bolted Stringer	6.7lbs/ft² 32kg/m²	1000lbs 454kg	3000lbs 1363kg	350lbs/ft² 16.75kPa	Not Recommended		150lbs 68kg
PERF1250	2.0mm	Bolted Stringer	7.3lbs/ft² 35kg/m²	1250lbs 567kg	3750lbs 1701kg	400lbs/ft² 19.1kPa	Not Recommended		150lbs 68kg

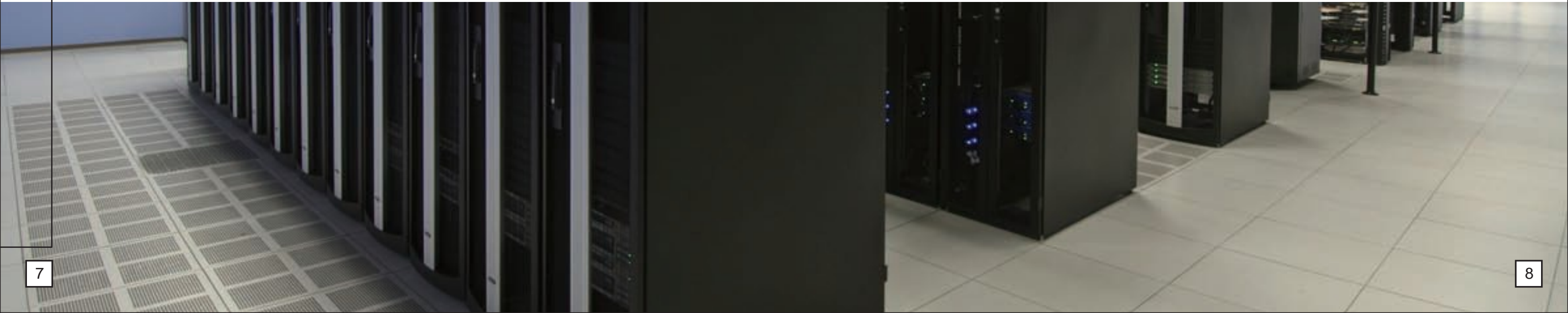


Bare/HPL/Vinyl Finished Perforated Steel Panel + Bolted Stringer System

- Dimension: 600mm x 600mm.
- Perforated panel airflow rate 50%.
- Perforated panel grades: PERF1000, PERF1250.
- Wide range of HPL/Vinyl finishes.

Bolted Stringer System

- Finished floor heights: 150mm ~ 1200mm.
- PVC taped rectangular stringer provides excellent loading and air-tightness performance.
- SteelCrete Access Floor is Zinc Whisker Free.



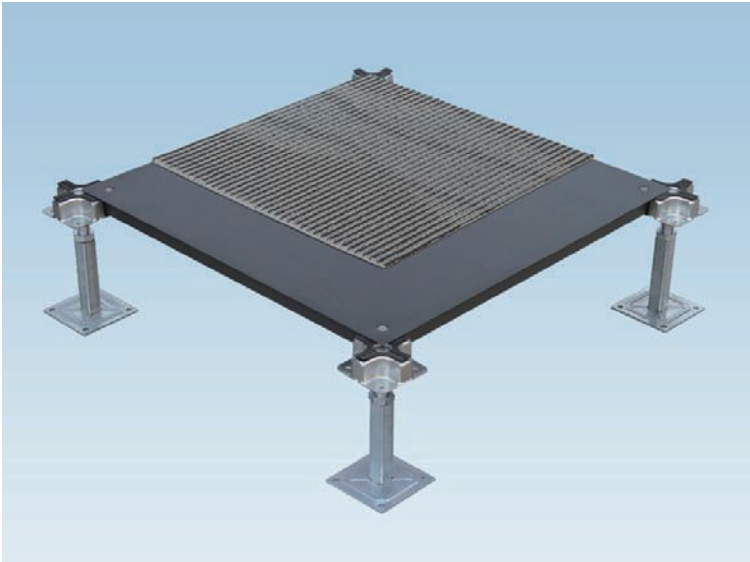
SteelCrete Access Floor for General Office



■ Raised access floor system is the basis of a flexible, high performance workplace. Where airflows cleaner and easier. Where technology adapts with ease. Where the infrastructure operates more cost-effectively than ever before. And where the workplace responds and changes at the speed of business.

Bared Finished SteelCrete Access Floor Performance Chart

General Information				Static Loads			Rolling Loads		Impact Loads
SteelCrete Panel	Top/Bottom Steel	Understructure	System Weight	Concentrated Loads	Ultimate Loads	Uniform Loads	10 Passes	10,000 Passes	
FS800B	0.8/0.7mm	Corner Lock	8.6lbs/ft² 41kg/m²	800lbs 363kg	2400lbs 1089kg	300lbs/ft² 14.35kPa	600lbs 272kg	500lbs 226kg	150lbs 68kg
FS1000B	0.8/0.9mm	Corner Lock	9.2lbs/ft² 44kg/m²	1000lbs 454kg	3000lbs 1363kg	350lbs/ft² 16.75kPa	800lbs 363kg	600lbs 272kg	150lbs 68kg
FS1250B	1.0/1.0mm	Corner Lock	9.8lbs/ft² 47kg/m²	1250lbs 567kg	3750lbs 1701kg	400lbs/ft² 19.1kPa	1000lbs 454kg	800lbs 363kg	150lbs 68kg



Bare Finished SteelCrete Panel + Corner Lock System

- Dimension: 600mm x 600mm.
- SteelCrete panel grades: SC800, SC1000, SC1250.

Corner Lock System

- Finished floor heights: 75mm ~ 1200mm.
- SteelCrete Access Floor is Zinc Whisker Free.



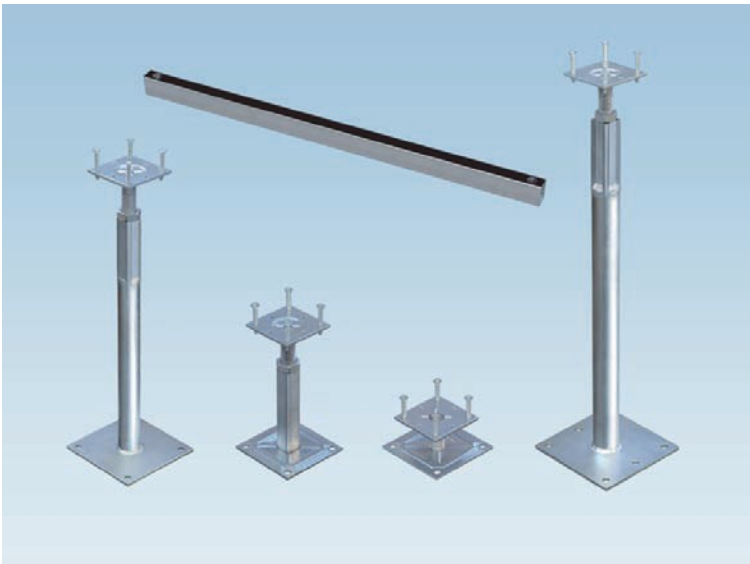
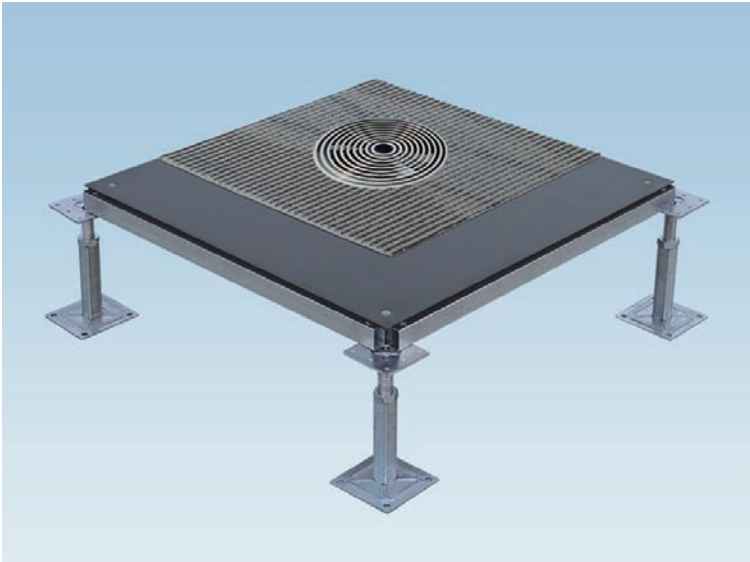
SteelCrete Access Floor for Underfloor Air Distribution



- Underfloor Air Distribution systems are a general class of air distribution systems that deliver air through diffusers in the raised access floor, with the intent of maintaining comfort and indoor air quality levels only in the occupied lower portion of space.

Bared Finished SteelCrete Access Floor Performance Chart

General Information				Static Loads			Rolling Loads		Impact Loads
SteelCrete Panel	Top/Bottom Steel	Understructure	System Weight	Concentrated Loads	Ultimate Loads	Uniform Loads	10 Passes	10,000 Passes	
FS800B	0.8/0.7mm	Bolted Stringer	9.2lbs/ft² 44kg/m²	800lbs 363kg	2400lbs 1089kg	300lbs/ft² 14.35kPa	600lbs 272kg	500lbs 226kg	150lbs 68kg
FS1000B	0.8/0.9mm	Bolted Stringer	9.8lbs/ft² 47kg/m²	1000lbs 454kg	3000lbs 1363kg	350lbs/ft² 16.75kPa	800lbs 363kg	600lbs 272kg	150lbs 68kg
FS1250B	1.0/1.0mm	Bolted Stringer	10.4lbs/ft² 50kg/m²	1250lbs 567kg	3750lbs 1701kg	400lbs/ft² 19.1kPa	1000lbs 454kg	800lbs 363kg	150lbs 68kg



Bare Finished SteelCrete Panel + Bolted Stringer System

- Dimension: 600mm x 600mm.
- SteelCrete panel grades: SC800, SC1000, SC1250.
- Used with TROX® Floor Diffuser.

Bolted Stringer System

- Finished floor heights: 150mm ~ 1200mm.
- PVC taped rectangular stringer provides excellent loading and air-tightness performance.
- SteelCrete Access Floor is Zinc Whisker Free.

TROX® Floor Diffuser

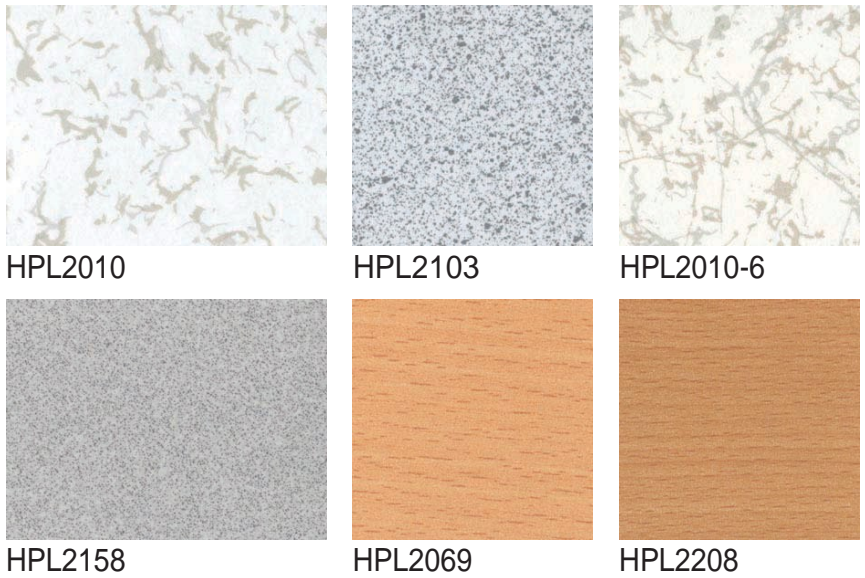
- TROX® floor diffusers type FB can provide comfortable and energy efficient air discharge into the space, by complimenting existing upward convection streams present in the occupied zone. This principle allows the local heat loads to be targeted directly.
- TROX® floor diffusers type FB can be used with SteelCrete Access Floors for Underfloor Air Distribution applications.





HPL And Vinyl Finishes

- One of the advantages of a raised access floors is that it is fitted dry to overcome any difficulties on the building's floor slab.
- By offering a wide variety of aesthetical and functional finishes, it is an extremely versatile system which gives the designer great freedom of action.

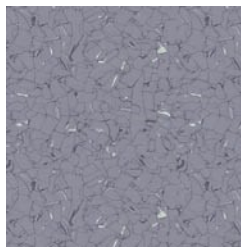


Dissipative HPL Tile

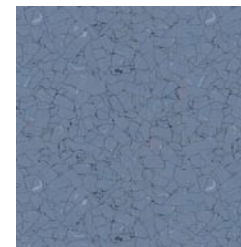
- Thickness: 1.6 mm
- Electrical Resistance: $1 \times 10^6 \sim 2 \times 10^{10}$ Ohm



C6101



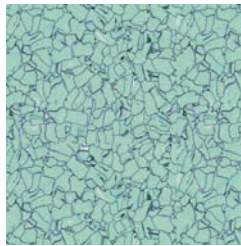
C6061



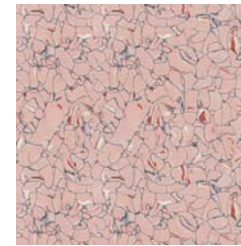
C6091



C601



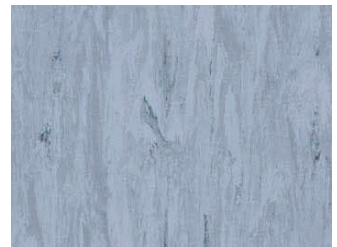
C6181



C6131

LG® ESD Control Vinyl Tile

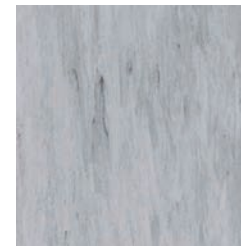
- Thickness: 2.0 mm
- Electrical Resistance: $2.5 \times 10^4 \sim 1 \times 10^6$ Ohm



0112-Storm



0002-Platinum



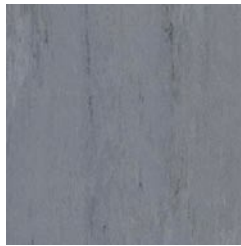
0005-Steel

Gerflor® MIPOLAM ESD Control Vinyl Tile

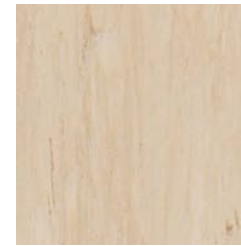
- Thickness: 2.0 mm
- Electrical Resistance: $1 \times 10^6 \sim 1 \times 10^8$ Ohm



0306-Green



0013-Pewter



0006-Honey



Direcciones:

ICTEC SRL LA PAZ

Dirección: Av. Mariscal Montenegro N° 1350 Edificio J&M 3er Piso

Telf.: +591-2-2141425

Correo: contacto@ictec.com.bo

Web:

<https://www.ictec.com.bo>

Direcciones:

ICTEC SRL SANTA CRUZ

Dirección: Alameda. Junin N° 451

Tel: +591-3-3351864.

Direcciones:

ICTEC LLC – USA

Mail: contact@ictec-global.com

Web:

<https://ictec-global.com>